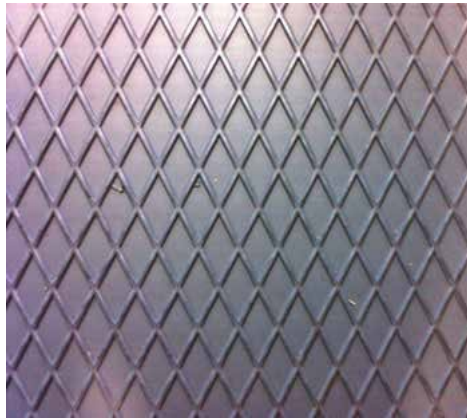


LAMIERE STRIATE



Dimensioni

	Spessore (mm.)						
	3	4	5	6	8	10	12
peso a mq.	3,9	4,7	6,2	7,8	9,4	12,2	14,1
2.000 x 1.000	57	73	89	104	136	167	198
2.500 x 1.250	89	114	138	163	212	261	309
3.000 x 1.500	128	164	199	234	305	376	445